



## Medium Chess Puzzle # 0088

By

G Bud Games  
<https://gbud.in>

December 10, 2021

## Contents

<b>Medium Chess puzzle # 0088 - Promote your pawn in 2 moves</b>	<b>4</b>
Medium chess puzzle 0088 . . . . .	4
Solution to medium chess puzzle 0088 . . . . .	5
Solution 1 . . . . .	5
Right moves for the solution to the medium chess puzzle 0088	7
Explanation for the moves . . . . .	8
Categories of medium chess puzzle 0088 . . . . .	8
medium chess puzzle 0088 chart . . . . .	9
How to view the solution to medium chess puzzle 0088 . . . . .	11
How to get help for moves in the medium chess puzzle 0088 . . . . .	12
Play chess for free . . . . .	13

## List of Figures

1	<a href="https://gbud.in/gk14fq2">Solve this medium chess puzzle 0088. Promote your pawn in 2 moves @ https://gbud.in/gk14fq2</a> . . . . .	4
2	<a href="https://gbud.in/gk14fq2">Solve this medium chess puzzle online with solution @ https://gbud.in/gk14fq2</a> . . . . .	4
3	Initial board position of medium chess puzzle 0088 . . . . .	5
4	Rxe7 - Opponent's rook pins your pawn to your king so that it can not move. If you move your king they will sacrifice their rook to stop the promotion of pawn. . . . .	6
5	Re6+ - Your rook sacrifices itself to deflect the opponent's rook by having a fork on opponent's king and rook. . . . .	6
6	Rxe6 - This is a zugzwang move as the opponent's rook is forced to respond. Opponent's rook captures your rook . . . . .	7
7	b8=Q - since the pawn is unpinned, it moves and gets promoted to a queen. This is how you can promote your pawn in 2 moves. . . . .	7
8	medium chess puzzle 88 chart 1 . . . . .	9
9	medium chess puzzle 88 chart 2 . . . . .	10
10	medium chess puzzle 88 chart 3 . . . . .	10
11	medium chess puzzle 88 chart 4 . . . . .	11
12	<a href="https://gbud.in/gk14fq2">Click the solution button to view solutions @ https://gbud.in/gk14fq2</a> . . . . .	11
13	<a href="https://gbud.in/gk14fq2">Click the help button to get help on next move @ https://gbud.in/gk14fq2</a> . . . . .	12
14	<a href="https://gbud.in/chsmdpz">Solve more medium puzzles @ https://gbud.in/chsmdpz</a> . . . . .	12

15	Solve other puzzles @ <a href="https://gbud.in/chsgppz">https://gbud.in/chsgppz</a> . . . . .	12
16	Play chess online for free. Solve puzzles and play with friends	13
17	Solve this puzzle online by scanning this QR code or go to the link below . . . . .	14

## Medium Chess puzzle # 0088 - Promote your pawn in 2 moves

Solve this medium chess puzzle and improve your chess games through improvement of your chess strategies and chess tactics.

Puzzle No : 0088

Difficulty level : medium

Description : Promote your pawn in 2 moves

Next Move : White

Player level : Intermediate

Short URL for puzzle : <https://gbud.in/gk14fq2>

### Medium chess puzzle 0088

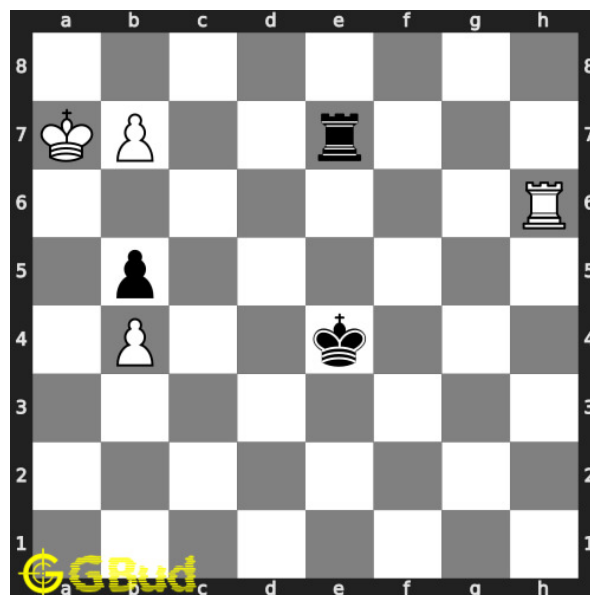


Figure 1: Solve this medium chess puzzle 0088. Promote your pawn in 2 moves @ <https://gbud.in/gk14fq2>



Figure 2: Solve this medium chess puzzle online with solution @ <https://gbud.in/gk14fq2>

Dont forget to check out [chess puzzles](#), [easy chess puzzles](#), [medium chess puzzles](#), [hard chess puzzles](#) and [chess puzzles collections](#) .

## Solution to medium chess puzzle 0088

At this puzzle, next [move](#) is by [White](#). The objective of the puzzle is to promote your pawn in 2 moves.

See the interactive solution at the [puzzle page](#)

### Solution 1

**Initial board position** This is the initial board position of medium chess puzzle 0088.

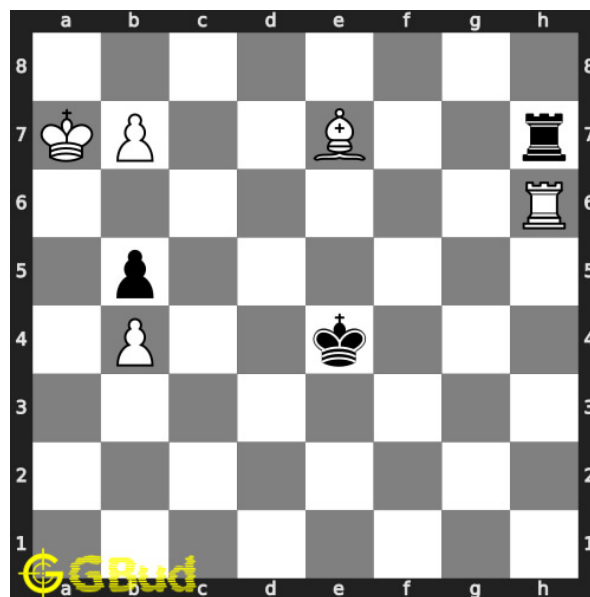


Figure 3: Initial board position of medium chess puzzle 0088

**Move 1** Move by black

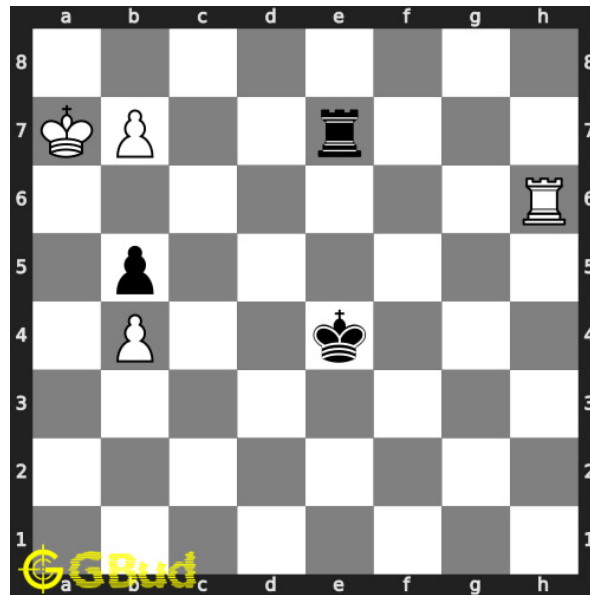


Figure 4: Rxe7 - Opponent's rook pins your pawn to your king so that it can not move. If you move your king they will sacrifice their rook to stop the promotion of pawn.

**Move 2** Move by white

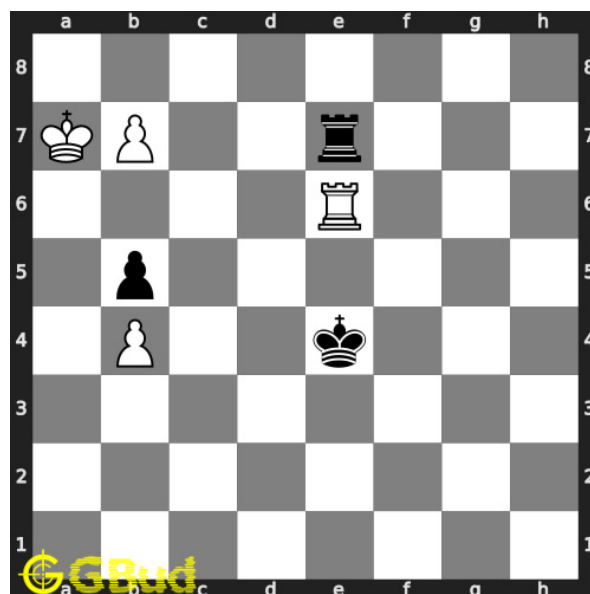


Figure 5: Re6+ - Your rook sacrifices itself to deflect the opponent's rook by having a fork on opponent's king and rook.

**Move 3** Move by black

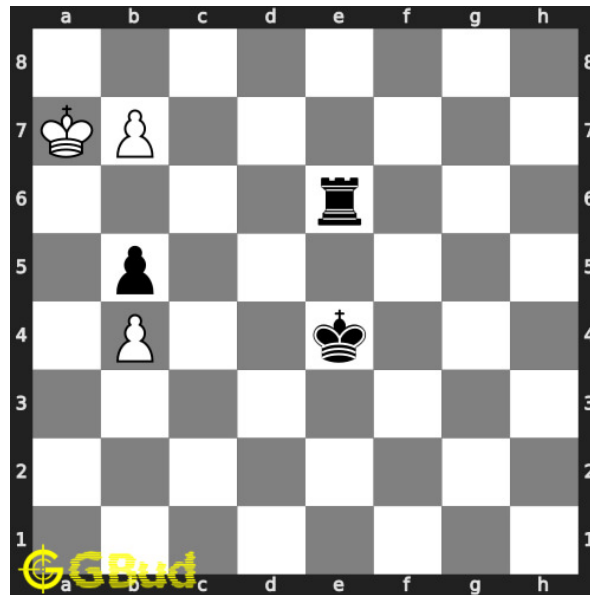


Figure 6: Rxe6 - This is a zugzwang move as the opponent's rook is forced to respond. Opponent's rook captures your rook

**Move 4** Move by white

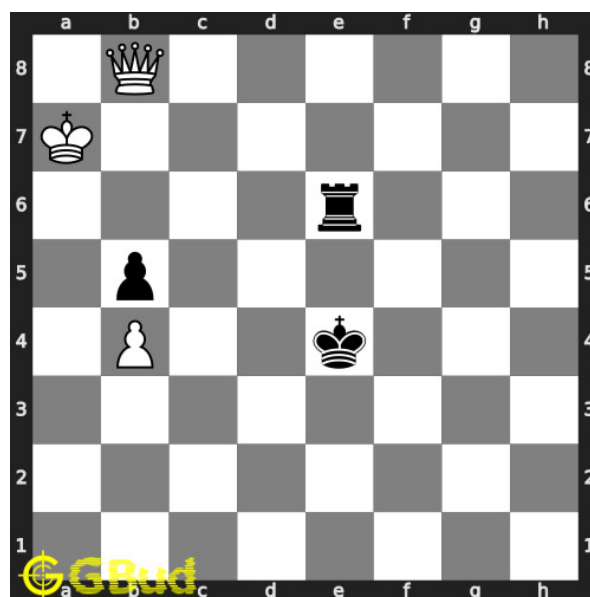


Figure 7: b8=Q - since the pawn is unpinned, it moves and gets promoted to a queen. This is how you can promote your pawn in 2 moves.

### Right moves for the solution to the medium chess puzzle 0088

Based on the objective of the puzzle, you have to make the right moves. Following are the right moves

1. Re6+, b8=Q

### **Explanation for the moves**

1. Rxe7 - Opponent's rook pins your pawn to your king so that it can not move. If you move your king they will sacrifice their rook to stop the promotion of pawn.
2. Re6+ - Your rook sacrifices itself to deflect the opponent's rook by having a fork on opponent's king and rook.
3. Rxe6 - This is a zugzwang move as the opponent's rook is forced to respond. Opponent's rook captures your rook
4. b8=Q - since the pawn is unpinned, it moves and gets promoted to a queen. This is how you can promote your pawn in 2 moves.
5. For right move - Good. you sacrificed your rook for the promotion of the pawn. Good job
6. For wrong move - You have missed the promotion of pawn narrowly. Try again

### **Categories of medium chess puzzle 0088**

This medium chess puzzle falls in these categories.

1. [Medium chess puzzles](#)
2. [Sacrifice puzzles in chess](#)
3. [Fork puzzles in chess](#)
4. [Promotion puzzles in chess](#)
5. [Strategy puzzles in chess](#)
6. [Zugzwang puzzles in chess](#)
7. [Pawn puzzles in chess](#)
8. [Rook puzzles in chess](#)



## medium chess puzzle 0088 chart



Figure 8: medium chess puzzle 88 chart 1



Figure 9: medium chess puzzle 88 chart 2



Figure 10: medium chess puzzle 88 chart 3



Figure 11: medium chess puzzle 88 chart 4

## How to view the solution to medium chess puzzle 0088

To view the [solution to this puzzle](https://gbud.in/gk14fq2), follow the steps given below

1. Go to the [puzzle page](https://gbud.in/gk14fq2)
2. Click the solution button (Key as shown [below](https://gbud.in/gk14fq2)) to view the solution



Figure 12: Click the solution button to view solutions @ <https://gbud.in/gk14fq2>

## How to get help for moves in the medium chess puzzle 0088

To get help or the possible next moves in the puzzle, , follow the steps given below

1. Go to the [puzzle page](#)
2. Click the help button (exclamation mark as shown [below](#)) to get help or suggestion on next possible [move](#)



Figure 13: Click the help button to get help on next move @ <https://gbud.in/gk14fq2>



Figure 14: Solve more medium puzzles @ <https://gbud.in/chsmdpz>



Figure 15: Solve other puzzles @ <https://gbud.in/chsgppz>

## Play chess for free

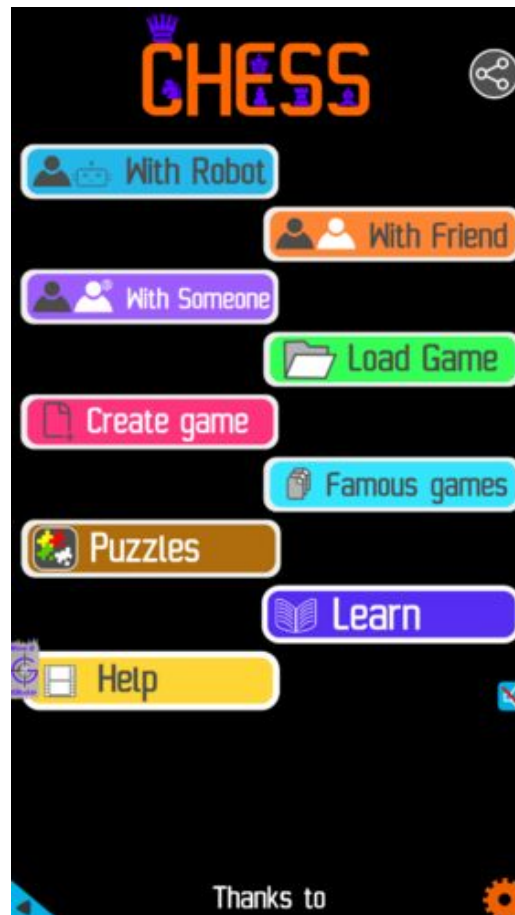


Figure 16: Play chess online for free. Solve puzzles and play with friends

Play chess for free at <https://gbud.in/chs>

We present you a platform to play chess online with friends for free. No need to install any app. You can play chess for free without registration or login.

Simple. You can do several chess related activities.

1. [solve chess puzzles](#)
2. [learn about chess](#)
3. [play chess with computer](#)
4. [play chess with friend](#)
5. [create your own chess games](#)

6. [fen viewer](#)
7. [fen editor](#)
8. [fen generator](#)
9. [pgn viewer](#)
10. [chess board editor](#)
11. [view famous chess games.](#)



Figure 17: Solve this puzzle online by scanning this QR code or go to the link below

<https://gbud.in/gk14fq2>

Read the latest article on Medium Chess puzzle # 0088 - Promote your pawn in 2 moves by scanning this QR code or click the link

Previous article : « [Medium Chess puzzle # 0087 - Gain rook](#)

Next article : [Medium Chess puzzle # 0089 - Mate in 2 moves](#) »

[Back to top](#)

[Contact Us](#)